













Worklist: 6393

<u>LAB_CASE</u>	<u>ITEM</u>	<u>ITEM_TYPE</u>	<u>DESCRIPTION</u>	
C2023-0929	1	CSPILL	AM 25/AM 26 Urine MultiDrug/THC Screen by LC-QQQ	
C2023-0991	1	UCK	AM 25/AM 26 Urine MultiDrug/THC Screen by LC-QQQ	
C2023-1024	1	UCK	AM 25/AM 26 Urine MultiDrug/THC Screen by LC-QQQ	
C2023-1025	1	UCK	AM 25/AM 26 Urine MultiDrug/THC Screen by LC-QQQ	
C2023-1048	1	UCK	AM 25/AM 26 Urine MultiDrug/THC Screen by LC-QQQ	
C2023-1054	2	BCK	AM 25/AM 26 Blood MultiDrug/THC Screen by LC-QQQ	
C2023-1083	1	BCK	AM 25/AM 26 Blood MultiDrug/THC Screen by LC-QQQ	
C2023-1084	1	BCK	AM 25/AM 26 Blood MultiDrug/THC Screen by LC-QQQ	
C2023-1091	2	BCK	AM 25/AM 26 Blood MultiDrug/THC Screen by LC-QQQ	
C2023-1095	1	BCK	AM 25/AM 26 Blood MultiDrug/THC Screen by LC-QQQ	
C2023-1102	1	BCK	AM 25/AM 26 Blood MultiDrug/THC Screen by LC-QQQ	
C2023-1106	1	BCK	AM 25/AM 26 Blood MultiDrug/THC Screen by LC-QQQ	
C2023-1133	1	BCK	AM 25/AM 26 Blood MultiDrug/THC Screen by LC-QQQ	
C2023-1139	1	UCK	AM 25/AM 26 Urine MultiDrug/THC Screen by LC-QQQ	
C2023-1140	1	BCK	AM 25/AM 26 Blood MultiDrug/THC Screen by LC-QQQ	
C2023-1141	1	BCK	AM 25/AM 26 Blood MultiDrug/THC Screen by LC-QQQ	
C2023-1142	1	UCK	AM 25/AM 26 Urine MultiDrug/THC Screen by LC-QQQ	
C2023-1144	1	UCK	AM 25/AM 26 Urine MultiDrug/THC Screen by LC-QQQ	
C2023-1168	2	BCK	AM 25/AM 26 Blood MultiDrug/THC Screen by LC-QQQ	
C2023-1185	1	BCK	AM 25/AM 26 Blood MultiDrug/THC Screen by LC-QQQ	
C2023-1188	1	BCK	AM 25/AM 26 Blood MultiDrug/THC Screen by LC-QQQ	

Worklist: 6393



<u>LAB CASE</u>	<u>ITEM</u>	<u>ITEM TYPE</u>	<u>DESCRIPTION</u>	
C2023-1191	2	UCK	AM 25/AM 26 Urine MultiDrug/THC Screen by LC-QQQ	
C2023-1192	1	BCK	AM 25/AM 26 Blood MultiDrug/THC Screen by LC-QQQ	
C2023-1196	2	BCK	AM 25/AM 26 Blood MultiDrug/THC Screen by LC-QQQ	
C2023-1212	1	BCK	AM 25/AM 26 Blood MultiDrug/THC Screen by LC-QQQ	
C2023-1213	2	BCK	AM 25/AM 26 Blood MultiDrug/THC Screen by LC-QQQ	
C2023-1225	6	BCK	AM 25/AM 26 Blood MultiDrug/THC Screen by LC-QQQ	
C2023-1231	1	BCK	AM 25/AM 26 Blood MultiDrug/THC Screen by LC-QQQ	
C2023-1242	2	UCK	AM 25/AM 26 Urine MultiDrug/THC Screen by LC-QQQ	
C2023-1245	1	BCK	AM 25/AM 26 Blood MultiDrug/THC Screen by LC-QQQ	
C2023-1248	2	UCK	AM 25/AM 26 Urine MultiDrug/THC Screen by LC-QQQ	

AM# 25: Multi-Drug Screen in Blood and Urine by LC-MS/MS

Extraction Date: 06/05/23 Analyst: Anne Nord
Plate lot#: 230119 Plate retest date: 07/19/2023

Mobile phase A: 10mM Ammonium Formate
0.5M Ammonium Hydroxide
Mobile phase B: 0.1% Formic Acid in MeOH
Ethyl Acetate LC 20% Methanol
Blank Blood Lot: 22B52016-1 **Blank Urine lot:** 12522 **Column:** Agilent Phenyl Hexyl (4.6x50mm, 2.7um)
LCMS-QQQ ID: 69679

Pre-Analytic:

- 1. Check levels of mobile phases and needle wash refill as needed. Ensure waste is not full.
- 2. Ensure correct column is installed and begin mobile phase flow allow to equilibrate ~ 30 minutes.

Analytic:

- 1. Remove standards, plate, controls, and samples from cold storage. Allow to reach room temperature.
- 2. Urine hydrolysis pipette: 250 ul urine in blank well, add 40 ul BG Turbo, add 100 ul 500 mm sodium phosphate buffer mix for at least five minutes ambient temperature.
Pipette 250 µL blood (**calibrated pipette**) or 250 ul urine in wells of analytical (standards) plate. **Pipette ID: 390993**
- 3. Pipette **250 µL of 0.5 M ammonium hydroxide** in wells of analytical plate.
- 4. Place on shaking incubator at ambient temp., 900 rpm for 15 minutes.
- 5. Transfer **300 µL of blood or urine+base** mixture to corresponding wells of SLE+ plate.
- 6. Apply positive pressure for approx. 10-15 seconds (or until no liquid remains on top of sorbent).
(Load at 85-100 PSI- Selector to the right) Manifold ID: 66792
- 7. Wait 5 minutes.
- 8. Add **900 µL ethyl acetate**.
- 9. Wait 5 minutes.
- 10. Apply positive pressure for approx. 10-15 seconds. *(12-15 PSI- Selector to the left)*.
- 11. Add **900 µL ethyl acetate**.
- 12. Wait 5 minutes.
- 13. Apply positive pressure for approx. 10-15 seconds. *(12-15 PSI- Selector to the left)*.
- 14. Remove plate containing eluate. add 50 ul 1% HCl in MeOH Place on SPE Dry and evaporate to dryness at approx. 35°C.
SPE Dry ID: 66819
- 15. Reconstitute in **100 µL 20% LC MeOH** in LC Water and heat seal plate with foil. Place in autosampler and run worklist.

Post-Analytic

- 1. Open quantitation software and create a new quantitation batch.
- 2. Make necessary changes to integration limits
- 3. Evaluate samples, S/N of primary transition >5 and S/N of secondary transition >3 or evaluation of peak symmetry and resolution. Within +/- 2% or 0.1 min RT of administrative control. Calculated concentration 5 or greater or 2-5 for discretionary range.
- 4. Did all QCs pass for each analyte? (If no is it described in comments?)
- 5. Central File Packet to include: LIMS Worklist, Method Checklist, Calibration and Control Reports

COMMENTS:



Toxicology AM method 25/28 external control prep

working solution 10000 ng/ml in meoh diphendydramine, methamphetamine, alprazolam, , morphine

Stock solution 1mg/ml 50 ul each in 4800 ul MeOH (VWR 21050767)

ppd 7/7/22: Exp: 7/7/23 lot 7722 by AMN

Drug	lot	expiration
Methamphetamine	FE03132001	7/1/2025
alprazolam	FE06102008	6/1/2025
Diphendydramine	FN02212011	3/1/2025
Morphine	FE03232010	4/1/2025

AM 25/28 control 500 ul working solution (7722) in 4500 ul negative urine (1000ng/mL Expected concentration)

ppd 7/7/22, exp 7/7/23 lot u7722 negative urine 21522 by AMN

AM 25/28 Blood Control: 50ul working solution (7722) in 4950 ul neg blood (100ng/mL Expected concentration)

ppp 7/7/22, exp 7/7/23 lot b7722 neg blood 22B52016-3 by AMN

	1	2	3	4	5	6	7	8	9	10	11	12
A	cal 1	1141-1	1095-1							1242-2	991-1	929-1
B		1168-2	1212-1								1142-1	1025-1
C	negative blood	1185-1	1213-2								1144-1	1048-1
D	1054-2	1192-1	1225-6									1139-1
E	1084-1	1196-2	1231-1								1248-2	
F	1091-2	1083-1	1245-1								1191-2	1024-1
G	1106-1	1133-1	1188-1								positive urine control	
H	1140-1	1102-1									negative urine	

C2023-____-

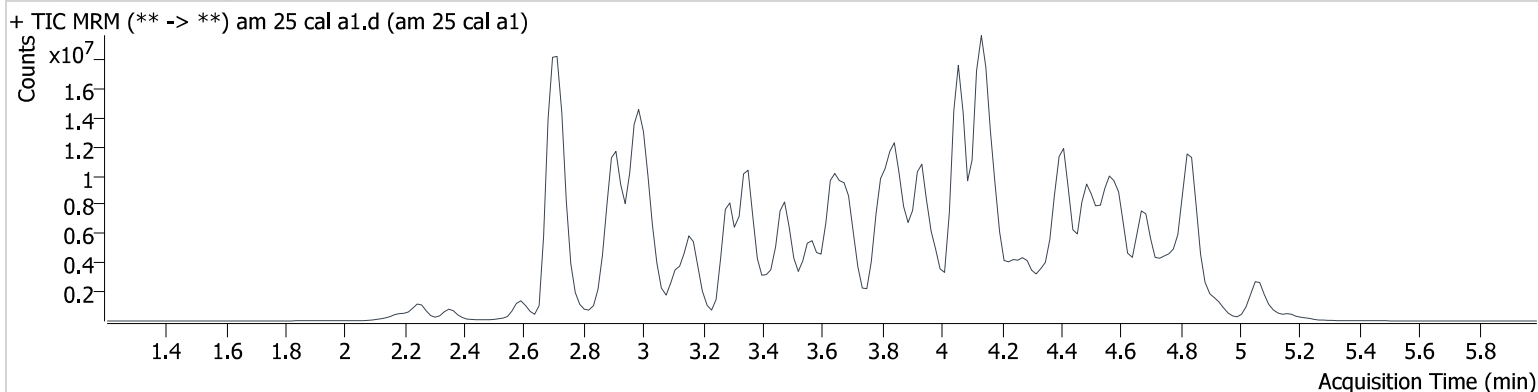
plate position 2

AM #25 Multi-Drug Screen Results

Batch results D:\MassHunter\Data\2023\am 25-26\060523\QuantResults\mds.batch.bin
Calibration Last Update 6/6/2023 11:57:21 AM

Instrument	69679	Data File	am 25 cal a1.d
Type	Cal	Sample	am 25 cal a1
Acq. Method	mds713.m	Operator	Anne Nord
Sample Position	P2-A1	Comment	
Injection Volume	2.5		
Acq. Date-Time	6/5/2023 12:18:15 PM		
Sample Info.			

Sample Chromatogram



Name	RT	Resp.	S/N	S/N	ISTD Resp.	Calc. Conc.
10-OH-Carbamazepine	3.850	2677302	9899.5	361.2	6984222	10.000
6-MAM	2.862	49181	207.2	12755.9	1224502	10.000
7-aminoclonazepam	3.616	773642	620.3	853.9	3796387	10.000
7-aminoflunitrazepam	3.832	1356697	559.0	448.5	3796387	10.000
9-Hydroxyrisperidone	3.931	6483290	5788100.3	154062.4	3796387	10.000
Acetyl Fentanyl	3.812	408464	266.2	82025.1	17040478	10.000
Acetyl Norfentanyl	2.871	307192	1981.8	429.4	25541994	10.000
a-hydroxyalprazolam	4.703	441884	∞	1083.8	6984222	10.000
alpha-hydroxymidazolam	4.732	1919058	2306.3	618.0	12354950	10.000
alpha-PHP	3.851	3144825	8181.8	618.0	7168961	10.000
alpha-PVP	3.545	4180916	553.7	815.0	7168961	10.000
Alprazolam	4.767	2275660	476.0	442.6	12354950	10.000
Amitriptyline	4.602	2403433	720.2	354.8	7122703	10.000
Amphetamine	2.921	2704571	11164.7	818.5	7168961	10.000
Benzoylcegonine	3.447	247512	23.6	75.3	343628	10.000
Brompheniramine	4.198	127280	116986.2	49.9	10026969	10.000
Buprenorphine	4.299	83761	45732.1	358297.9	2022035	10.000
Bupropion	3.821	3711425	641.0	694.0	16639108	10.000
Carbamazepine	4.344	7815528	812.2	1029.3	6101721	10.000
Carisoprodol	4.297	1078412	344805.4	144.0	4756133	10.000
Chlordiazepoxide	4.935	1068299	2214.5	605.9	12354950	10.000
Chlorpheniramine	4.078	7176138	10693.2	66.4	10026969	10.000
Chlorpromazine	4.826	2684736	843093.1	4876.9	10927645	10.000
Citalopram	4.243	3179035	873.0	13439.7	46983339	10.000
Clomipramine	4.841	2870174	1064.4	1227.0	5429942	10.000
Clonazepam	4.628	1056497	343.9	652.6	110104	10.000
Clonazolam	4.517	1032402	393.4	93945.0	6984222	10.000
clozapine	4.411	4548119	1785403.4	1304146.8	17181967	10.000
Cocaethylene	3.860	4115767	2072678.4	2008.0	19680193	10.000
Cocaine	3.630	4533394	1895.8	319.6	19680193	10.000
Codeine	2.729	377213	279356.0	710.3	6101721	10.000
Cyclobenzaprine	4.510	4031230	1601.2	210.4	7122703	10.000
Desipramine	4.572	5987734	1172914.4	1814.7	7122703	10.000



AM #25 Multi-Drug Screen Results

Name	RT	Resp.	S/N	S/N	ISTD Resp.	Calc. Conc.
Dextromethorphan	4.187	2199982	2000.5	694617.3	10026969	10.000
Dextrorphan	3.419	3159453	12212.1	860610.6	7168961	10.000
Diazepam	5.044	1141281	475.6	1418.5	12354950	10.000
Dihydrocodeine	2.682	1198885	2452.8	283.2	6101721	10.000
Dimethyltryptamine	2.994	2293920	1242.2	13396.7	7168961	10.000
Diphenhydramine	4.143	9903125	2463.6	1288.5	46983339	10.000
Doxepin	4.309	2316098	325.0	372.9	17181967	10.000
Doxylamine	3.695	10020315	533.1	678.5	7168961	10.000
Duloxetine	4.508	106244	141.2	1037.1	5429942	10.000
EDDP	4.186	1652242	475.7	233624.6	2831276	10.000
Estazolam	4.692	6468154	742.9	836.5	12354950	10.000
Etizolam	4.747	241836	83150.0	725485.0	12354950	10.000
Fentanyl	4.073	283128	130.0	60003.2	15348696	10.000
Flualprazolam	4.595	757906	393.0	443157.6	12354950	10.000
Flunitrazepam	4.735	1883964	912.0	960.2	6984222	10.000
Fluorofentanyl	4.103	261186	70383.3	207.6	15348696	10.000
Fluoxetine	4.491	3482635	1110.2	63615.4	5429942	10.000
Flurazepam	4.239	3033185	873268.5	185362.6	2022035	10.000
Hydrocodone	2.957	1239945	∞	605.2	6101721	10.000
Hydromorphone	2.352	1453168	1190.4	488.6	262956	10.000
hydroxyzine	4.654	4714049	4026.1	1481601.7	17181967	10.000
Imipramine	4.570	7226807	992.9	1238.0	7122703	10.000
Ketamine	3.436	2602698	1824.2	209.4	10519470	10.000
Lamotrigine	3.604	259157	228.4	8345.6	7168961	10.000
Levamisole	2.902	2682891	13011.3	413.2	19680193	10.000
Levetiracetam	2.600	1459121	2751.9	∞	3796387	10.000
Lorazepam	4.596	220227	907.5	160.7	6984222	10.000
Maprotiline	4.601	1731427	1150.5	212.3	7122703	10.000
MDA	3.041	3054183	2123.5	549.8	29587327	10.000
MDEA	3.285	4158035	888.4	471.3	29587327	10.000
MDMA	3.117	4461825	∞	2537.3	29587327	10.000
Meperidine	3.651	2321080	1693.3	1330.0	262956	10.000
Meprobamate	3.715	721775	1005.6	245.0	4756133	10.000
Methadone	4.536	6387791	3709.4	2108.3	17040478	10.000
Methamphetamine	3.027	9036795	∞	∞	29587327	10.000
Methocarbamol	3.667	440684	587.3	1855.3	4756133	10.000
Methylphenidate	3.575	9831492	4540.1	1370.5	15293627	10.000
Metoprolol	3.479	883642	531.8	12170.0	7168961	10.000
Midazolam	4.824	617132	169124.7	12684.8	3796387	10.000
Mirtazapine	3.788	3141998	10945.4	25728.0	2022035	10.000
Mitragynine	4.239	460804	124815.5	249676.8	15348696	10.000
Morphine	2.186	388887	∞	∞	262956	10.000
Norbuprenorphine	3.886	86724	6347.7	36721.4	2022035	10.000
Nordiazepam	4.894	1125714	4027.0	343.5	12354950	10.000
Norfentanyl	3.360	5775481	1953.1	489.5	25541994	10.000
Norhydrocodone	2.943	100364	20283.8	11425.5	6101721	10.000
norketamine	3.468	604941	∞	∞	10519470	10.000
Normeperidine	3.683	5612051	4898.5	606.6	262956	10.000
Noroxycodone	2.911	1249637	514.8	114.3	6101721	10.000
Nortriptyline	4.603	2508430	1016145.4	666.2	5429942	10.000
O-desmethyl-tramadol	2.915	7447057	1650.4	1095.8	8442972	10.000
O-Desmethylvenlafaxine	3.296	1981373	∞	∞	8442972	10.000
Olanzapine	3.752	1381498	590969.5	247.1	5429942	10.000
Oxazepam	4.708	1484075	482.8	153.6	6984222	10.000
Oxycodone	2.909	2569834	1183.5	1530.1	10519470	10.000
Oxymorphone	2.242	1935645	256.0	208.6	262956	10.000
Paroxetine	4.518	509144	333.9	6785.9	5429942	10.000
Phenazepam	4.823	1292227	2627.5	2497.3	12354950	10.000
Phencyclidine	3.990	5594347	1990.3	1351.4	8442972	10.000



AM #25 Multi-Drug Screen Results

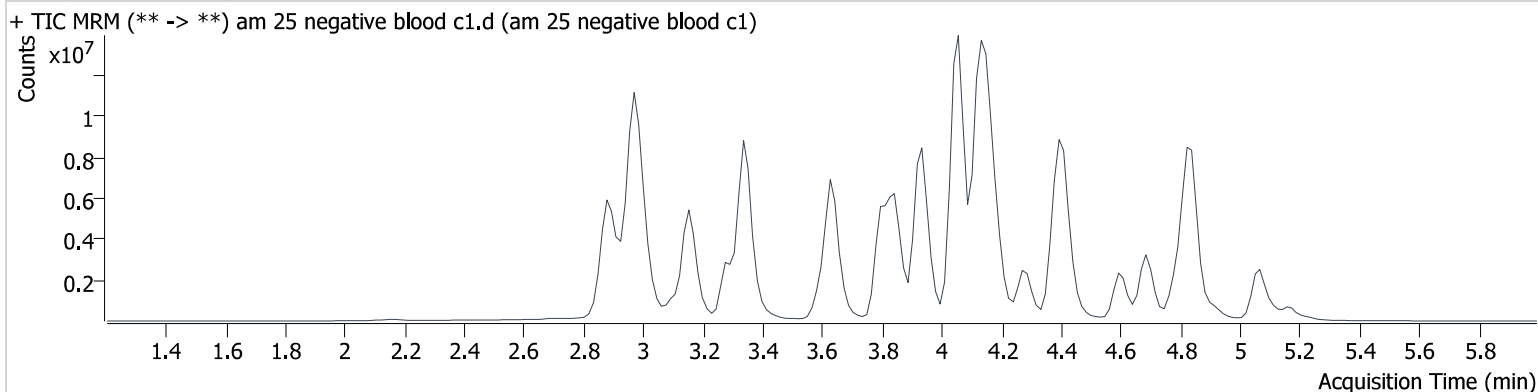
Name	RT	Resp.	S/N	S/N	ISTD Resp.	Calc. Conc.
Phentermine	3.195	1479679	∞	316.6	15293627	10.000
Phenytoin	4.236	228410	410.2	84.2	110104	10.000
primidone	3.515	210611	3479.3	51.1	110104	10.000
Promethazine	4.478	8030842	1633569.8	651.8	7122703	10.000
Pseudoephedrine	2.722	58394010	1449.8	2395.5	15293627	10.000
Quetiapine	4.485	5130463	2056303.0	2868198.5	10026969	10.000
Risperidone	4.116	5621459	1964.9	548.1	10026969	10.000
Sertraline	4.798	1274358	462278.0	∞	5429942	10.000
Sufentanil	4.377	264146	51939.1	408.2	15348696	10.000
Tapentadol	3.499	4924010	2255.4	564.9	10519470	10.000
Temazepam	4.859	3241620	2037.2	148.1	12354950	10.000
Topiramate	3.904	37689	21192.0	8097.1	204719	10.000
Tramadol	3.480	8654831	2523.7	98.6	1224502	10.000
Trazodone	4.424	4468735	1848389.4	11071.6	17040478	10.000
Venlafaxine	3.894	8635071	3192.5	514.2	8442972	10.000
Zaleplon	4.492	1843580	658582.8	530500.2	6984222	10.000
Zolpidem	4.076	7216204	2690.8	2342.0	28798175	10.000
Zopiclone	4.040	438124	499.0	116890.7	1817267	10.000

AM #25 Multi-Drug Screen Results

Batch results D:\MassHunter\Data\2023\am 25-26\060523\QuantResults\mds.batch.bin
Calibration Last Update 6/6/2023 11:57:21 AM

Instrument	69679	Data File	am 25 negative blood c1.d
Type	Sample	Sample	am 25 negative blood c1
Acq. Method	mds713.m	Operator	Anne Nord
Sample Position	P2-C1	Comment	
Injection Volume	2.5		
Acq. Date-Time	6/5/2023 12:25:06 PM		
Sample Info.			

Sample Chromatogram

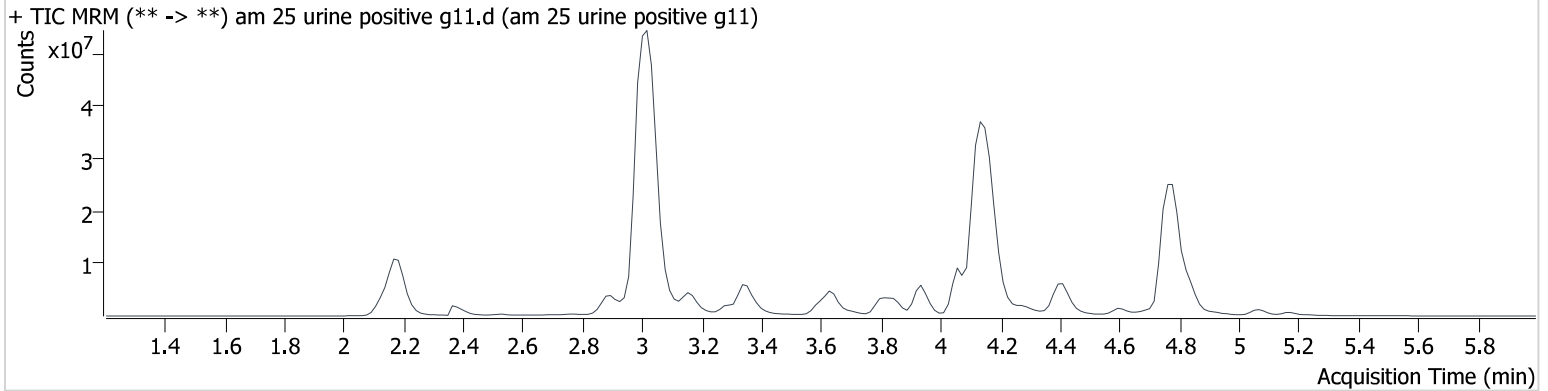


AM #25 Multi-Drug Screen Results

Batch results D:\MassHunter\Data\2023\am 25-26\060523\QuantResults\mds.batch.bin
Calibration Last Update 6/6/2023 11:57:21 AM

Instrument	69679	Data File	am 25 urine positive g11.d
Type	Sample	Sample	am 25 urine positive g11
Acq. Method	mds713.m	Operator	Anne Nord
Sample Position	P2-G11	Comment	
Injection Volume	2.5		
Acq. Date-Time	6/5/2023 3:53:07 PM		
Sample Info.			

Sample Chromatogram



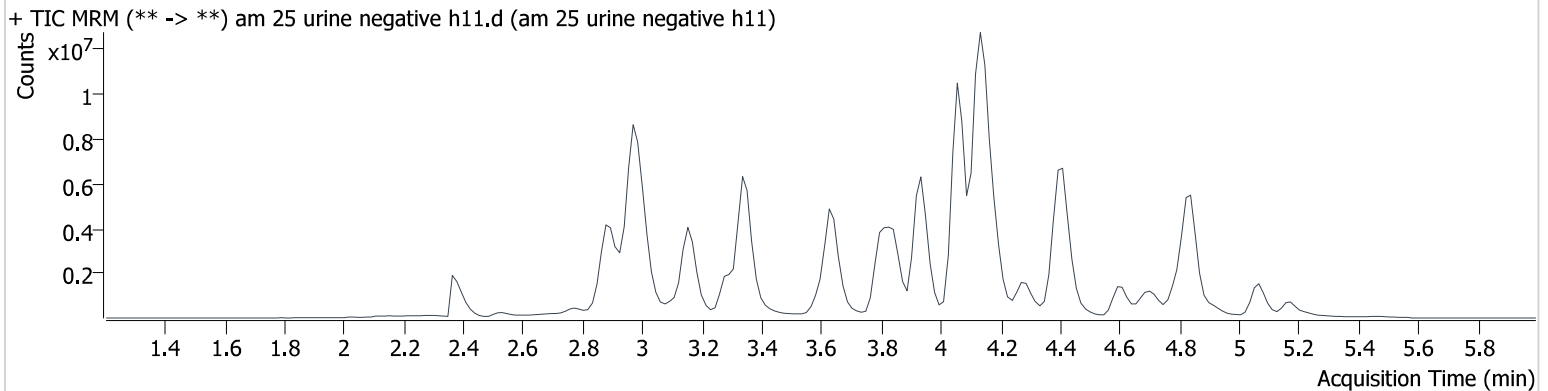
Name	RT	Resp.	S/N	S/N	ISTD Resp.	Calc. Conc.
Alprazolam	4.767	55368920	1280.1	1126.4	9477951	317.165
Diphenhydramine	4.143	96802054	1091.1	1305.2	26805734	171.328
Methamphetamine	3.027	84181411	∞	∞	15823996	174.177
Morphine	2.171	16042208	∞	∞	159676	679.334

AM #25 Multi-Drug Screen Results

Batch results D:\MassHunter\Data\2023\am 25-26\060523\QuantResults\mds.batch.bin
Calibration Last Update 6/6/2023 11:57:21 AM

Instrument	69679	Data File	am 25 urine negative h11.d
Type	Sample	Sample	am 25 urine negative h11
Acq. Method	mds713.m	Operator	Anne Nord
Sample Position	P2-H11	Comment	
Injection Volume	2.5		
Acq. Date-Time	6/5/2023 3:59:49 PM		
Sample Info.			

Sample Chromatogram



AM# 26: THC and Metabolites Screen in Blood by LC-MS/MS

Extraction Date: 06/05/23 Analyst: Anne Nord

Plate lot#: 230113 Plate retest date: 7/13/23

Mobile phase A: 10mM Ammonium Formate
0.1% Formic Acid in Water

Mobile phase B: 0.1% Formic acid in MeOH
MTBE Hexane

Blank Blood Lot: 22B52016-1 **Urine Blank:** 12522

Column: Agilent Phenyl Hexyl (4.6x50mm: 2.7 um)

LCMS-QQQ ID: 69679

Pre-Analytic:

- 1. Check levels of mobile phases and needle wash refill as needed. Ensure waste is not full.
- 2. Ensure correct column is installed and begin mobile phase flow allow to equilibrate ~ 30 minutes.

Analytic:

- 1. Remove standards, plate, controls, and samples from cold storage. Allow to reach room temperature.
- 2. Urine hydrolysis: add 1.5 ml urine to blank plate, add 250 ul 1N KOH mix and incubate at 40 degrees for 15 minutes.
Pipette **1000 µL blood (calibrated pipette)** in wells of analytical (standards) plate. **Pipette ID: K52558G**
Pipette 1000 ul urine to analytical (standards) plate.
- 3. Place on shaking incubator at ambient temp., 900 rpm for 15 minutes.
- 4. Pipette **500 µL 0.1% formic acid in blood** wells **500 ul saturated phosphate buffer in urine** wells of analytical plate.
- 5. Place on shaking incubator at ambient temp., 900 rpm for 15 minutes.
- 6. Transfer **800 µL of blood acid or urine acid** mixture to corresponding wells of SLE+ plate.
- 7. Apply positive pressure for approx. 10-15 seconds (or until no liquid remains on top of sorbent).
(Load at 85-100 PSI- Selector to the right) Manifold ID: 66792
- 8. Wait 5 minutes.
- 9. Add **2.25 mL MTBE** (add in 3 increments of 750 µL).
- 10. Wait 5 minutes.
- 11. Apply positive pressure for approx. 10-15 seconds. **(12-15 PSI- Selector to the left)**.
- 12. Add **2.25 mL hexane** (add in 3 increments of 750 µL).
- 13. Wait 5 minutes.
- 14. Apply positive pressure for approx. 10-15 seconds. **(12-15 PSI- Selector to the left)**.
- 15. Remove plate containing eluate. Place on SPE Dry and evaporate to dryness at approx. 35°C.
SPE Dry ID: 66819
- 16. Reconstitute in **100 µL 100% LCMS MeOH** and heat seal plate with foil. Place in autosampler and run worklist.

Post-Analytic

- 1. Create batch and process data.
- 2. Calculated sample concentration of 3 ng/mL or greater for THC and THC-OH, a calculated sample concentration of 10 ng/mL or greater for Carboxy-THC.
- 3. Retention time within +/- 2% or +/-0.100 min whichever is greater of the average retention time of the calibrators.
- 4. Did all QCs pass for each analyte? Yes
- 5. Central File Packet to include: LIMS Worklist, Method Checklist, Calibration and Control Reports

COMMENTS:

	1	2	3	4	5	6
a	cal 1	Internal control urine	1168-2	1095-1	991-1 mixing plate	991-1 SLE and injection plate
b	cal 2	negative blood	1185-1	1212-1	1024-1	1248-2 SLE and injection plate
c	cal 3	1054-2	1188-1	1213-2	1025-1	
d	cal 4	1084-1	1192-1	1225-6	1048-1	
e	Cal 5	1091-2	1196-2	1231-1	1139-1	
f	cal 6	1106-1	1083-1	1245-1	1142-1	
g	cal 7	1140-1	1133-1	negative urine	1144-1	
h	Internal control (blood)	1141-1	1102-1	929-1	1191-2 SLE and injection	

3 same lot different plate
1191-2 mixing plate
1248-2 mixing plate

Plate position 3

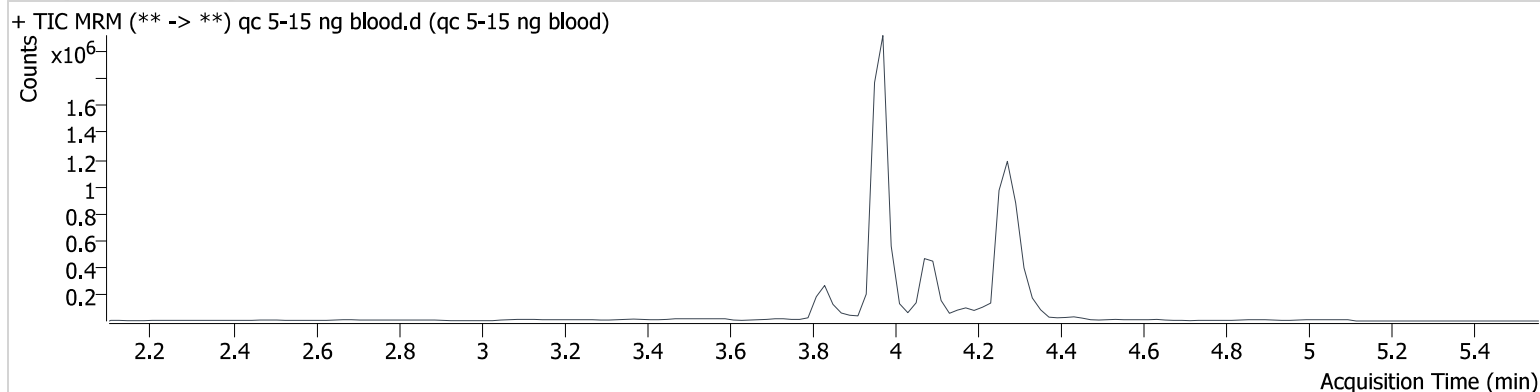
c2023-0____-__

AM #26 Cannabinoids Screen Results

Batch results D:\MassHunter\Data\2023\am 25-26\060523\QuantResults\cann.batch.bin
Calibration Last Update 6/6/2023 7:50:04 AM

Instrument	69679	Data File	qc 5-15 ng blood.d
Type	QC	Sample	qc 5-15 ng blood
Acq. Method	am 26 cann scr 5-5-20.m	Operator	Anne Nord
Sample Position	P3-H1	Comment	
Injection Volume	5		
Acq. Date-Time	6/5/2023 6:06:30 PM		
Sample Info.			

Sample Chromatogram



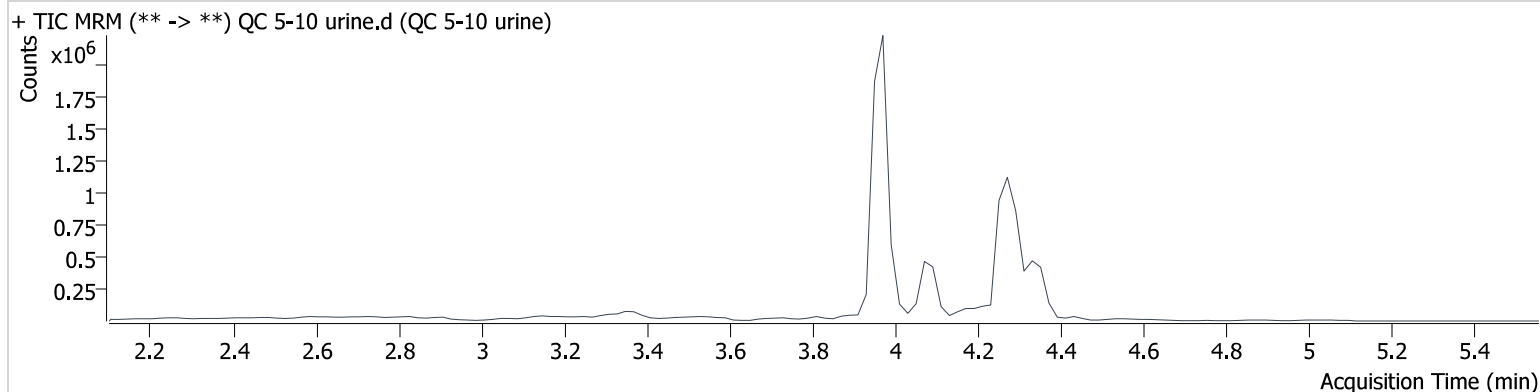
Name	RT	Resp.	ISTD Resp.	Final Conc.
THC	4.365	4675	100347	6.137 ng/ml
THC-COOH	4.093	165049	826227	15.418 ng/ml
THC-OH	3.979	47241	4899158	4.491 ng/ml

AM #26 Cannabinoids Screen Results

Batch results D:\MassHunter\Data\2023\am 25-26\060523\QuantResults\cann.batch.bin
Calibration Last Update 6/6/2023 7:50:04 AM

Instrument	69679	Data File	QC 5-10 urine.d
Type	Sample	Sample	QC 5-10 urine
Acq. Method	am 26 cann scr 5-5-20.m	Operator	Anne Nord
Sample Position	P3-A2	Comment	
Injection Volume	5		
Acq. Date-Time	6/5/2023 6:12:58 PM		
Sample Info.			

Sample Chromatogram



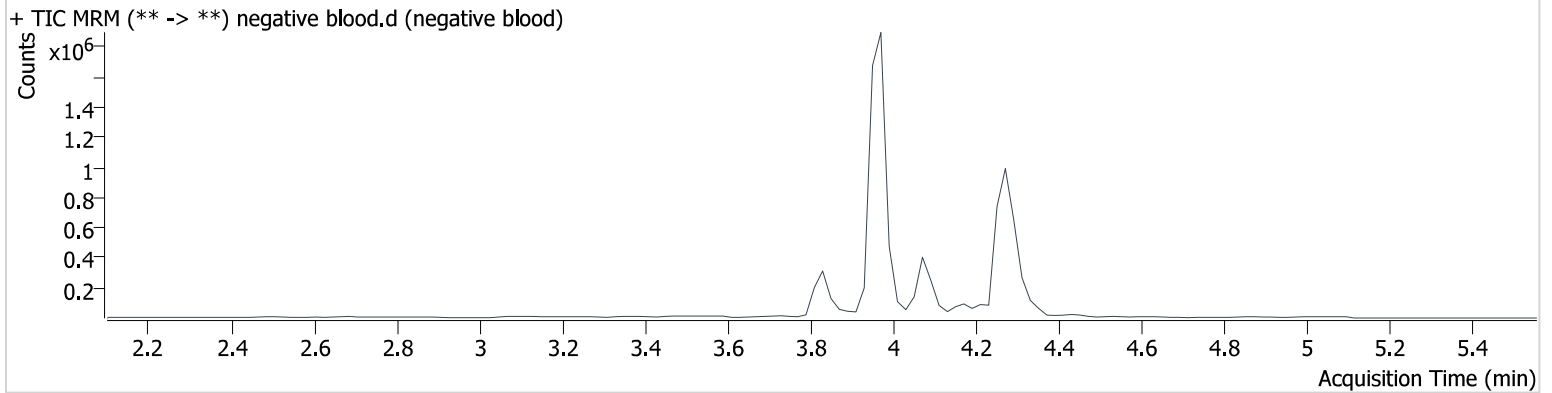
Name	RT	Resp.	ISTD Resp.	Final Conc.
THC	4.365	31069	755119	5.452 ng/ml
THC-COOH	4.093	161467	809589	15.393 ng/ml
THC-OH	3.979	52026	5464880	4.436 ng/ml

AM #26 Cannabinoids Screen Results

Batch results D:\MassHunter\Data\2023\am 25-26\060523\QuantResults\cann.batch.bin
Calibration Last Update 6/6/2023 7:50:04 AM

Instrument	69679	Data File	negative blood.d
Type	Sample	Sample	negative blood
Acq. Method	am 26 cann scr 5-5-20.m	Operator	Anne Nord
Sample Position	P3-B2	Comment	
Injection Volume	5		
Acq. Date-Time	6/5/2023 6:19:26 PM		
Sample Info.			

Sample Chromatogram

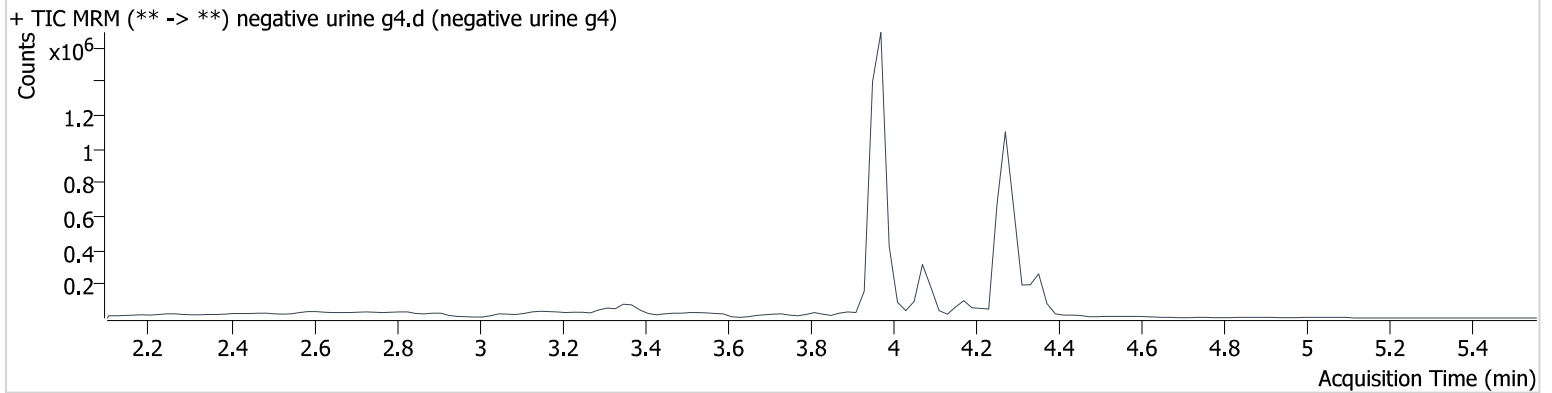


AM #26 Cannabinoids Screen Results

Batch results D:\MassHunter\Data\2023\am 25-26\060523\QuantResults\cann.batch.bin
Calibration Last Update 6/6/2023 7:50:04 AM

Instrument	69679	Data File	negative urine g4.d
Type	Sample	Sample	negative urine g4
Acq. Method	am 26 cann scr 5-5-20.m	Operator	Anne Nord
Sample Position	P3-G4	Comment	
Injection Volume	5		
Acq. Date-Time	6/5/2023 8:35:18 PM		
Sample Info.			

Sample Chromatogram

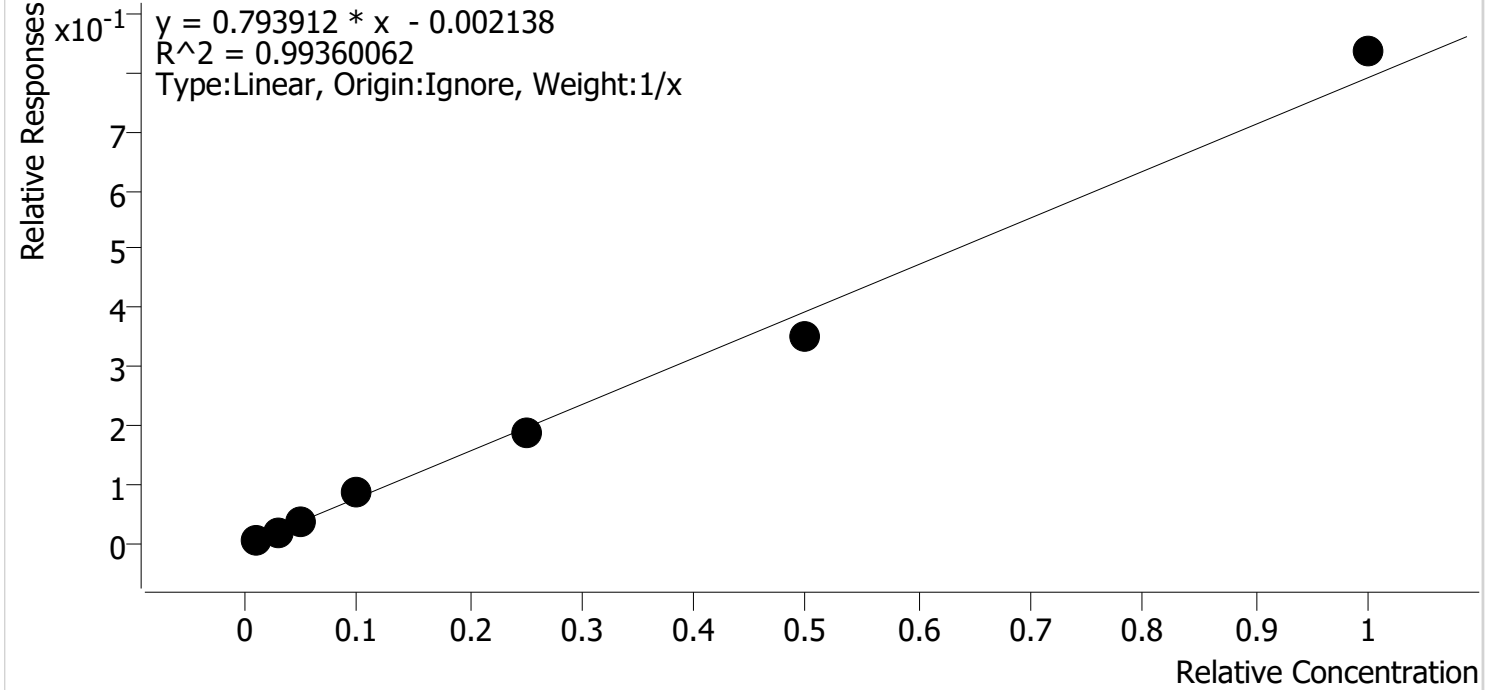


Compound Calibration Report



Batch results D:\MassHunter\Data\2023\am 25-26\060523\QuantResults\cann.batch.bin
Last Cal. Update 6/6/2023 7:50 AM
Analyst Name ISP\datastor
Analyte THC **Internal Standard** THC-d3

THC - 7 Levels, 7 Levels Used, 7 Points, 7 Points Used, 0 QCs



Sample	Level	Enabled	Expected Concentration	Final Concentration	Accuracy
cal 1	1	✓	1.0	1.1	108.3
cal 2	2	✓	3.0	2.7	91.6
cal 3	3	✓	5.0	5.0	99.3
cal 4	4	✓	10.0	10.9	109.1
cal 5	5	✓	25.0	24.3	97.2
cal-6	6	✓	50.0	44.4	88.8
cal-7	7	✓	100.0	105.6	105.6

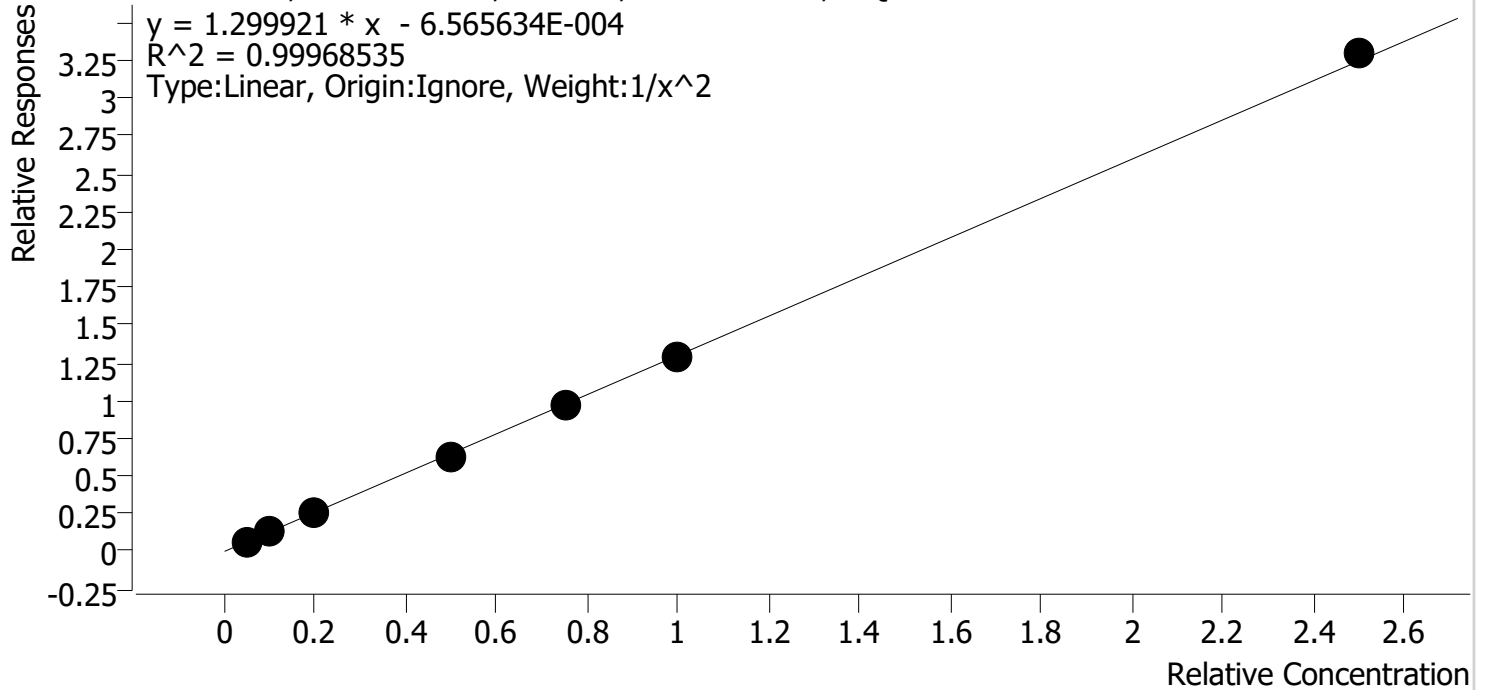
Compound Calibration Report



Batch results D:\MassHunter\Data\2023\am 25-26\060523\QuantResults\cann.batch.bin
Last Cal. Update 6/6/2023 7:50 AM
Analyst Name ISP\datastor
Analyte THC-COOH

Internal Standard THC-COOH-d9

THC-COOH - 7 Levels, 7 Levels Used, 7 Points, 7 Points Used, 0 QCs



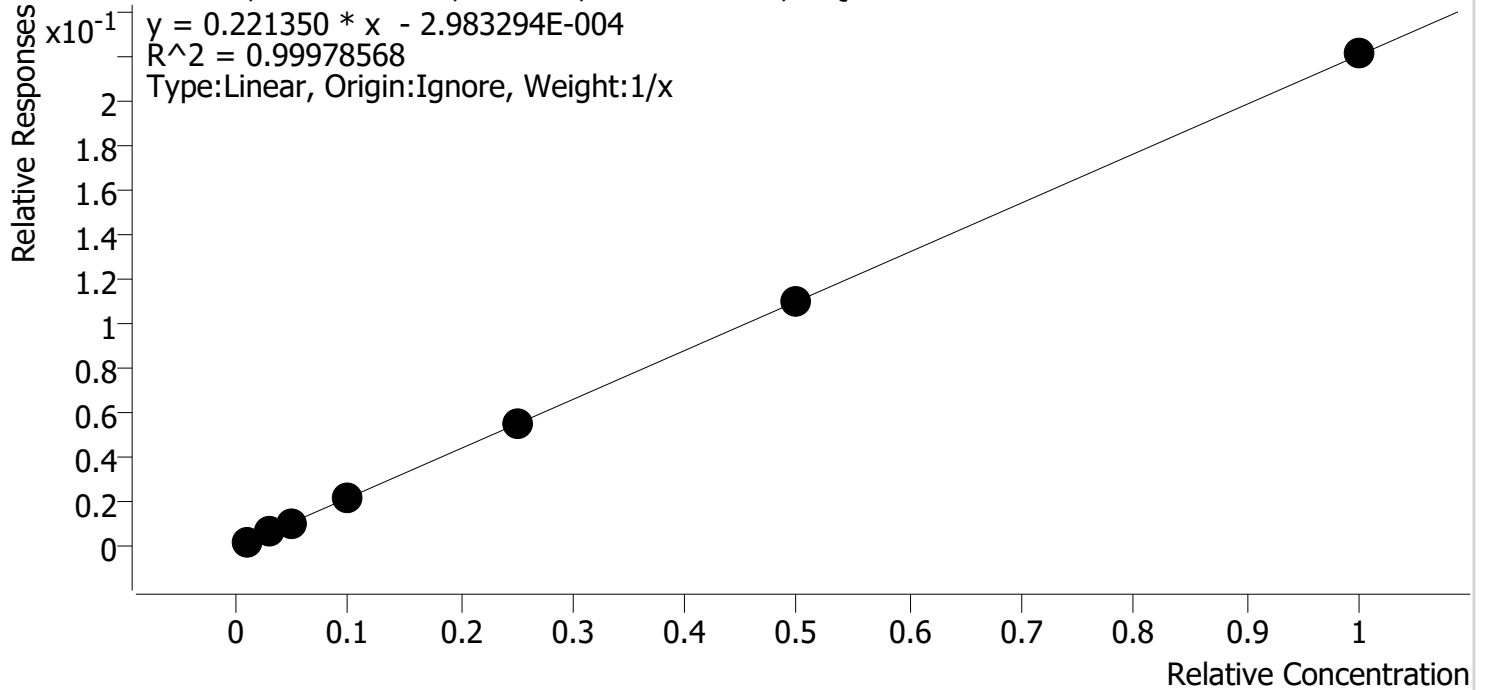
Sample	Level	Enabled	Expected Concentration	Final Concentration	Accuracy
cal 1	1	✓	5.0	5.0	99.7
cal 2	2	✓	10.0	10.2	101.8
cal 3	3	✓	20.0	19.6	98.2
cal 4	4	✓	50.0	49.1	98.1
cal 5	5	✓	75.0	75.5	100.7
cal-6	6	✓	100.0	100.0	100.0
cal-7	7	✓	250.0	253.7	101.5

Compound Calibration Report



Batch results D:\MassHunter\Data\2023\am 25-26\060523\QuantResults\cann.batch.bin
Last Cal. Update 6/6/2023 7:50 AM
Analyst Name ISP\datastor
Analyte THC-OH **Internal Standard** THC-OH-d3

THC-OH - 7 Levels, 7 Levels Used, 7 Points, 7 Points Used, 0 QCs



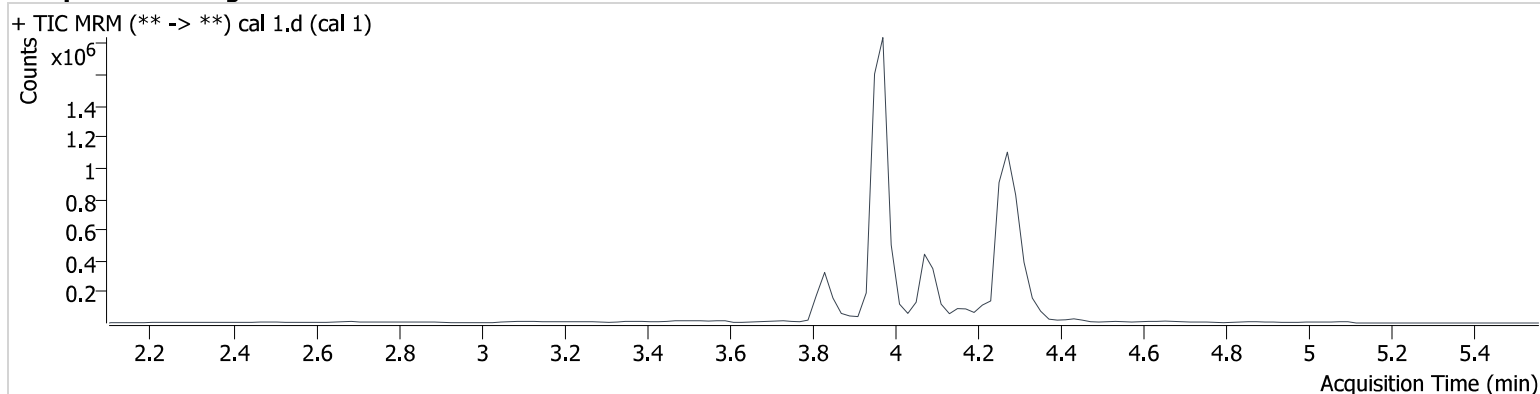
Sample	Level	Enabled	Expected Concentration	Final Concentration	Accuracy
cal 1	1	✓	1.0	1.1	109.2
cal 2	2	✓	3.0	3.0	98.4
cal 3	3	✓	5.0	4.7	95.0
cal 4	4	✓	10.0	9.7	96.7
cal 5	5	✓	25.0	24.9	99.7
cal-6	6	✓	50.0	50.3	100.6
cal-7	7	✓	100.0	100.3	100.3

AM #26 Cannabinoids Screen Results

Batch results D:\MassHunter\Data\2023\am 25-26\060523\QuantResults\cann.batch.bin
Calibration Last Update 6/6/2023 7:50:04 AM

Instrument	69679	Data File	cal 1.d
Type	Cal	Sample	cal 1
Acq. Method	am 26 cann scr 5-5-20.m	Operator	Anne Nord
Sample Position	P3-A1	Comment	
Injection Volume	5		
Acq. Date-Time	6/5/2023 5:21:03 PM		
Sample Info.			

Sample Chromatogram



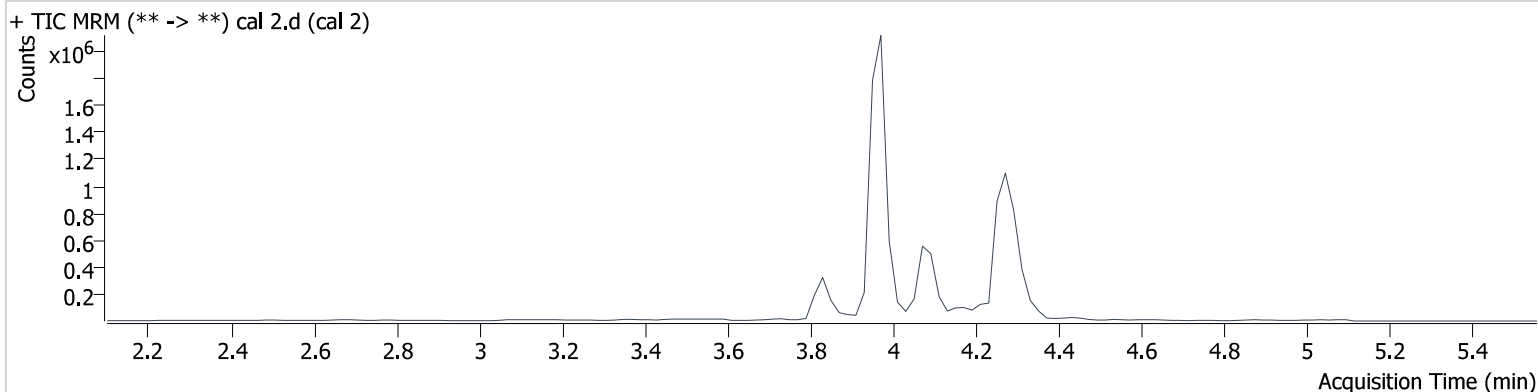
Name	RT	Resp.	ISTD Resp.	Final Conc.
THC	4.325	870	134562	1.083 ng/ml Low
THC-COOH	4.093	56395	879481	4.983 ng/ml Low
THC-OH	3.979	9799	4623135	1.092 ng/ml Low

AM #26 Cannabinoids Screen Results

Batch results D:\MassHunter\Data\2023\am 25-26\060523\QuantResults\cann.batch.bin
Calibration Last Update 6/6/2023 7:50:04 AM

Instrument	69679	Data File	cal 2.d
Type	Cal	Sample	cal 2
Acq. Method	am 26 cann scr 5-5-20.m	Operator	Anne Nord
Sample Position	P3-B1	Comment	
Injection Volume	5		
Acq. Date-Time	6/5/2023 5:27:41 PM		
Sample Info.			

Sample Chromatogram



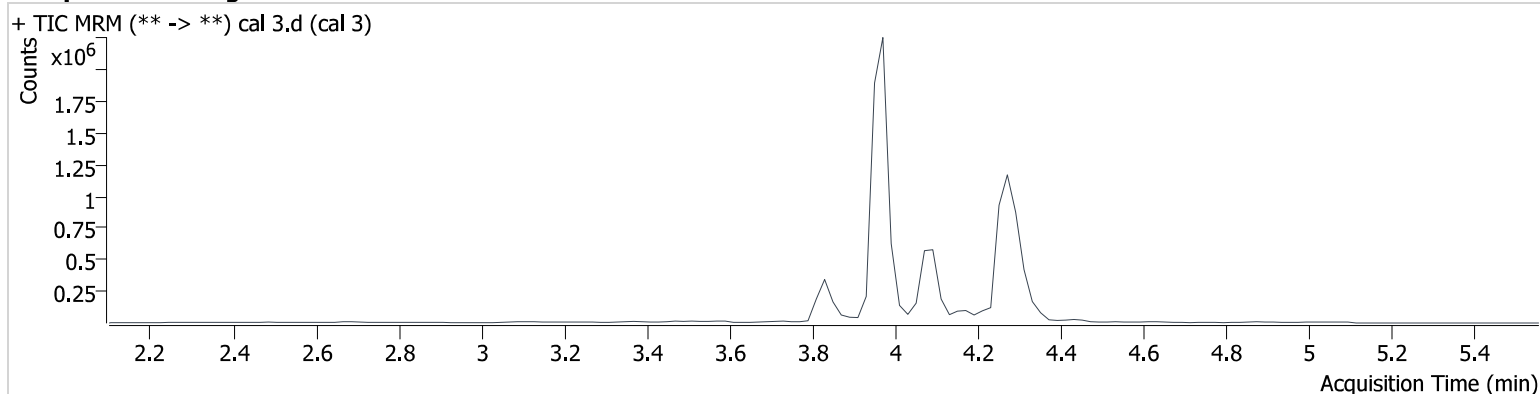
Name	RT	Resp.	ISTD Resp.	Final Conc.
THC	4.365	2742	139347	2.748 ng/ml Low
THC-COOH	4.093	142140	1079692	10.178 ng/ml
THC-OH	3.979	31861	5107118	2.953 ng/ml Low

AM #26 Cannabinoids Screen Results

Batch results D:\MassHunter\Data\2023\am 25-26\060523\QuantResults\cann.batch.bin
Calibration Last Update 6/6/2023 7:50:04 AM

Instrument	69679	Data File	cal 3.d
Type	Cal	Sample	cal 3
Acq. Method	am 26 cann scr 5-5-20.m	Operator	Anne Nord
Sample Position	P3-C1	Comment	
Injection Volume	5		
Acq. Date-Time	6/5/2023 5:34:09 PM		
Sample Info.			

Sample Chromatogram



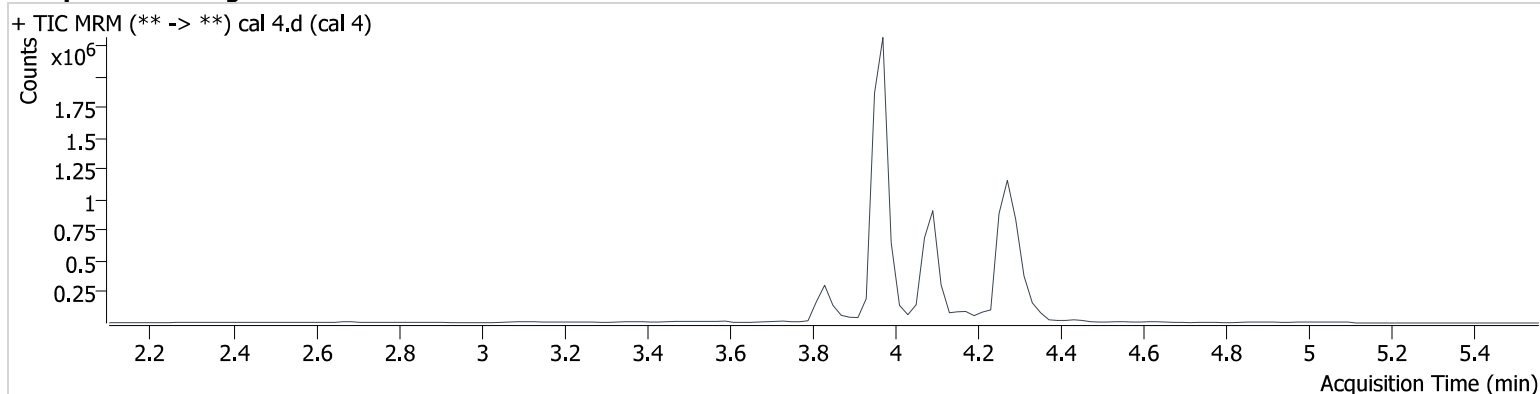
Name	RT	Resp.	ISTD Resp.	Final Conc.
THC	4.365	5001	134082	4.967 ng/ml
THC-COOH	4.093	248282	974850	19.643 ng/ml
THC-OH	3.979	53372	5224698	4.750 ng/ml

AM #26 Cannabinoids Screen Results

Batch results D:\MassHunter\Data\2023\am 25-26\060523\QuantResults\cann.batch.bin
Calibration Last Update 6/6/2023 7:50:04 AM

Instrument	69679	Data File	cal 4.d
Type	Cal	Sample	cal 4
Acq. Method	am 26 cann scr 5-5-20.m	Operator	Anne Nord
Sample Position	P3-D1	Comment	
Injection Volume	5		
Acq. Date-Time	6/5/2023 5:40:37 PM		
Sample Info.			

Sample Chromatogram



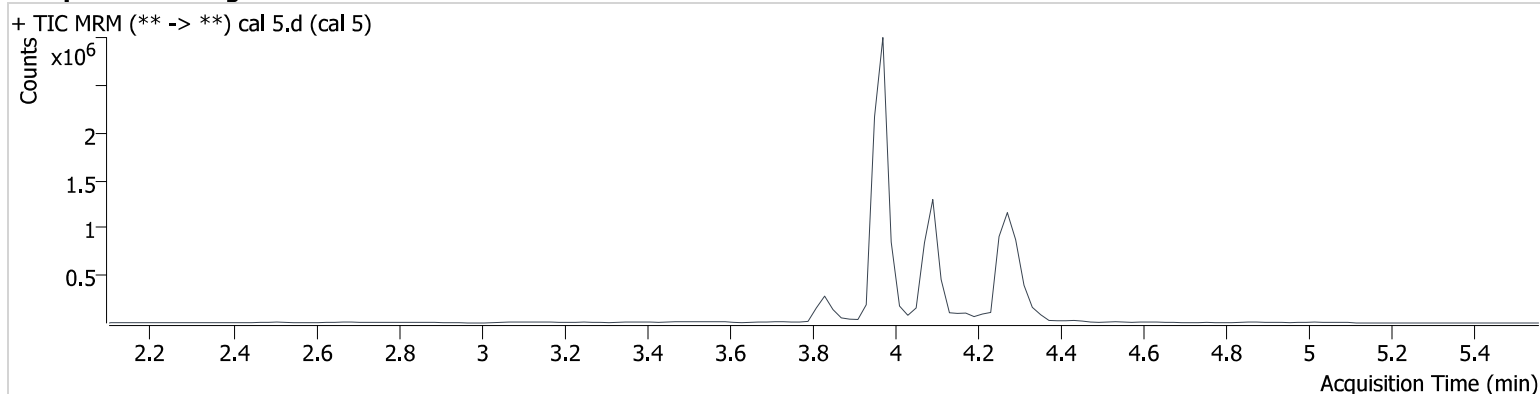
Name	RT	Resp.	ISTD Resp.	Final Conc.
THC	4.365	9898	117187	10.908 ng/ml
THC-COOH	4.093	560263	879365	49.063 ng/ml
THC-OH	3.979	102880	4872721	9.673 ng/ml

AM #26 Cannabinoids Screen Results

Batch results D:\MassHunter\Data\2023\am 25-26\060523\QuantResults\cann.batch.bin
Calibration Last Update 6/6/2023 7:50:04 AM

Instrument	69679	Data File	cal 5.d
Type	Cal	Sample	cal 5
Acq. Method	am 26 cann scr 5-5-20.m	Operator	Anne Nord
Sample Position	P3-E1	Comment	
Injection Volume	5		
Acq. Date-Time	6/5/2023 5:47:05 PM		
Sample Info.			

Sample Chromatogram



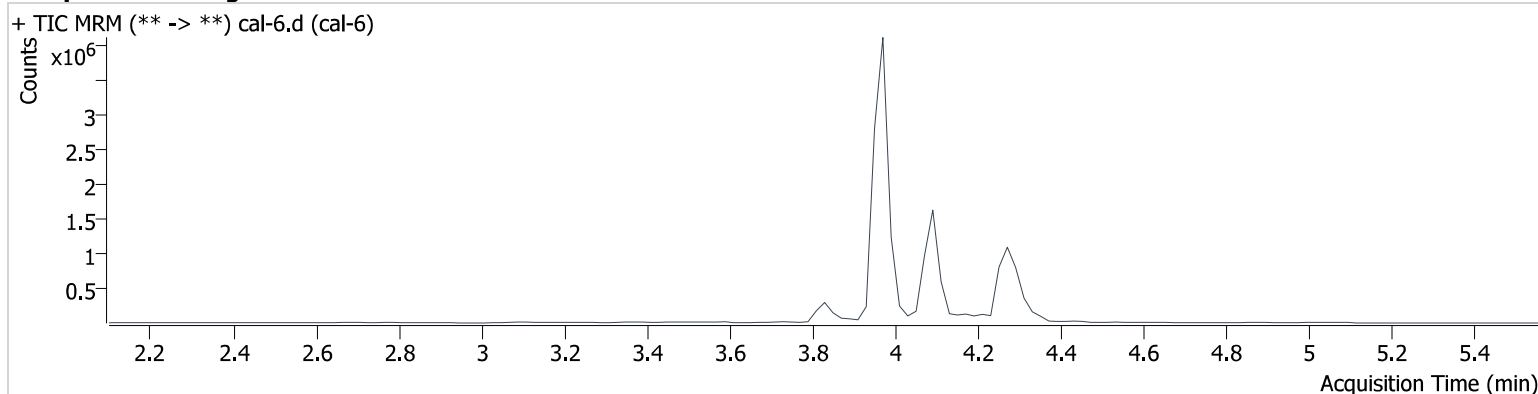
Name	RT	Resp.	ISTD Resp.	Final Conc.
THC	4.365	23270	121958	24.303 ng/ml
THC-COOH	4.093	875166	892164	75.513 ng/ml
THC-OH	3.979	267665	4878262	24.923 ng/ml

AM #26 Cannabinoids Screen Results

Batch results D:\MassHunter\Data\2023\am 25-26\060523\QuantResults\cann.batch.bin
Calibration Last Update 6/6/2023 7:50:04 AM

Instrument	69679	Data File	cal-6.d
Type	Cal	Sample	cal-6
Acq. Method	am 26 cann scr 5-5-20.m	Operator	Anne Nord
Sample Position	P3-F1	Comment	
Injection Volume	5		
Acq. Date-Time	6/5/2023 5:53:33 PM		
Sample Info.			

Sample Chromatogram



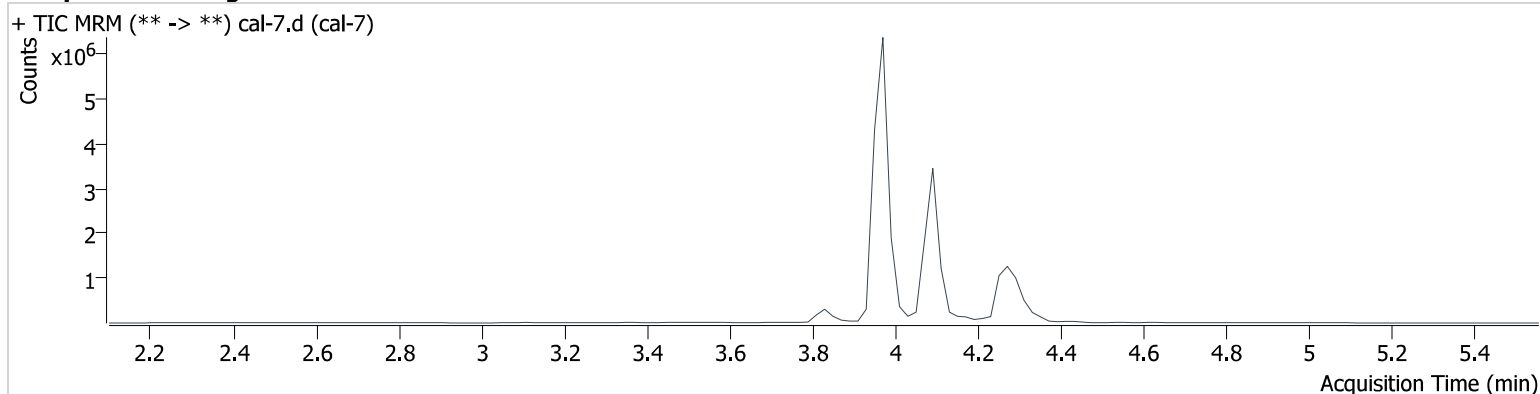
Name	RT	Resp.	ISTD Resp.	Final Conc.
THC	4.365	44383	126630	44.417 ng/ml
THC-COOH	4.093	1157850	890884	100.031 ng/ml
THC-OH	3.979	553594	4985836	50.297 ng/ml

AM #26 Cannabinoids Screen Results

Batch results D:\MassHunter\Data\2023\am 25-26\060523\QuantResults\cann.batch.bin
Calibration Last Update 6/6/2023 7:50:04 AM

Instrument	69679	Data File	cal-7.d
Type	Cal	Sample	cal-7
Acq. Method	am 26 cann scr 5-5-20.m	Operator	Anne Nord
Sample Position	P3-G1	Comment	
Injection Volume	5		
Acq. Date-Time	6/5/2023 6:00:02 PM		
Sample Info.			

Sample Chromatogram



Name	RT	Resp.	ISTD Resp.	Final Conc.
THC	4.365	89081	106554	105.573 ng/ml
THC-COOH	4.093	2794931	847503	253.746 ng/ml
THC-OH	3.979	1143092	5155064	100.312 ng/ml